

Newsletter – December 2014

Season's Greetings to all Ludlow 21 Members and Supporters.
Firstly, some Christmas-y things for you:

Christmas Shopping ethically online

Still looking for that special gift and can't find it locally?
Avoid the Amazon beast and use Ethical Consumer's
guides to buying online.

Go to <http://www.ethicalconsumer.org/buyersguides.aspx>

and look up Toy retailers, Booksellers etc in the A – Z list.

If you are not a member you can then Google the supplier or better still
invest in an Ethical Consumer subscription and benefit from all the extra member information.

BUT please try LOCAL SHOPS FIRST!



And then some outdoor fun to work off the excesses and blow away the cobwebs:

Christmas Cycle Rides

A Tweedy Christmas Ride: For all those who would like to start off Christmas Day with a difference - why not join us for a Tweed ride on Christmas Morn at 10am from Castle Square. Lots of fun and laughter guaranteed. All styles of wear from yesteryear welcome, or any other festive gear that suits the occasion, for that matter! Isla has kindly been offered mulled wine and minced pies on your return.
Email: smartycyclepants@gmail.com or
Tel: 0779 6687 134 if you can join us.



Here's a photo of the friendly bunch on our last outing to encourage you!

Macmillan Christmas Family Cycle Ride:

10.30am Sunday 28 December, Dinham Millennium Green, Ludlow.

Definitely a ride for all ages and abilities and all the little riders on their new (or old) bikes. A fun festive family cycle ride in aid of Macmillan Cancer Support. Would be really nice to see some of the many families who enjoyed the family rides so much at the Ludlow Cycling Festival back in September.



More at: <http://www.travelshropshire.co.uk/cycle/events/ludlow-christmas-cycle-ride.aspx>



Stand up for Justice We mean business

Around the world, a small number of British companies are taking decisions which result in people being mistreated or abused. Because they are not held to account, they continue their actions unchallenged. Traidcraft's Justice campaign is calling for people harmed by these companies to get justice – in the UK if needed – and for these companies to be held to account.

Join the campaign

Please send a postcard (obtainable from Ludlow Mascall Centre fair trade shop, Wesley's Café or the Fairtrade Stall at the Local Produce Market) to the leaders of the UK political parties.

Local Planning

Ludlow and the surrounding area has been hit by a rash of planning applications in the past months due to developers cashing in on the lax regulations provided by the new National Planning Policy Framework (NPPF) before local Site Allocations and Management of Development (SAMDev) regulations come into force. The NPPF is meant to "help achieve sustainable development" but appears to be doing the opposite!

You will no doubt be aware of the application for 215 houses north of the Town between the railway and the bypass, approved by Planning Officers, rejected by the Planning Committee and now going to appeal. An application (14/04608/OUT) for 137 houses on a very similar site (also bordered by the railway and the A49) has been made to the south and has attracted strong opposition from local residents. A much smaller application (14/04328/FUL) for just 2 houses in a field off the north end of Linney has attracted less attention but typifies the nonchalant dismissal of well-established rules and of local opinion that developers will adopt to make a profit (the site is outside the local SAMDev plan, on agricultural land in a flood plain, in a conservation area and will destroy a unique view). Comments on this and other applications can still be lodged via the Council's on-line Planning Register.

The Chamber and many residents are up-in-arms about a proposal to site a new supermarket and petrol station at Rocks Green that could take vital trade away from the Town Centre; there are a clutch of applications for solar farms in the Shropshire Hills, some close to Ludlow. We want renewable energy but do we want it in a sensitive landscape that attracts visitors to our rural idyll, or is that something we have to sacrifice?

How do we reconcile diluted planning regulations and profit-driven developers with the demand for more homes and more jobs for locals and the retention of Ludlow's historic, cultural and 'special' setting? Where is the integrated plan that allows Ludlow to grow rationally and sustainably? New homes with more residents need schools, doctors, dentists, shops and jobs. These are difficult questions that will require strong and co-ordinated action.

If you feel that Ludlow 21 should be taking a lead and you are prepared to get involved let us know. In any case make sure that your local Shropshire Councillor knows your views.

David Currant

Ludlow "Pride of Place"

Apologies to anyone who turned up to the recent collection on the last Saturday of the month. We had cancelled it, but then one of the local papers ran a story reminding anyone who was interested to turn up. Please see your e-mail from either Alan Stewart or Graeme Perks regarding the next one. Thanks to everyone who helped Cwm Harry out at the Medieval Christmas Fayre.

Next summer there is planned to be a Recycling & Upcycling carnival - do any of you schoolchildren out there fancy entering a float with this theme? More info on this in the next issue.

Free Online Course - Shale Gas & Fracking: Politics and Science

This is a course run by Nottingham University over a number of weeks that can be run on the internet for free. It allows you to increase your knowledge of this potentially controversial topic; it's difficult to argue against a difficult topic unless you have studied it and know something about it. Saying "No! No! No!" doesn't often work. Further information at <http://www.nottingham.ac.uk/studywithus/online/mooc.aspx>

Alan Stewart

'Growing Up Green & Global'

Friday 18th September 2015

Green Shropshire Exchange (GSX) have partnered with environmental social enterprise Learning 2B Sustainable to stage an expo and conference for Shropshire/Telford & Wrekin schools to showcase sustainability, biodiversity and global learning services available from local and national suppliers. GSX members who wish to exhibit at the event or attend as a delegate can benefit from priority booking and reduced rates. Simply download the [Early Bird Registration Form](#) and make sure you fill in the GSX contact information at the bottom of the form.

For more information please visit the [Learning 2B Sustainable website](#)

Updates to Contacts List

There have been a number of changes to the board and officers following the last AGM. Please see the new contacts list below for up-to-date details.

If possible would you please print and display the posters below advertising upcoming events.

Dates for your Diary

Below are events we are aware of at the time of producing the newsletter but check the *News and Forthcoming Events* section of the Ludlow21 website regularly for an up-to-date list.

December

Thursday 18 th December	9:00am – 2:00pm	<u>Local to Ludlow Market</u> The last market before Christmas, stock up on lots of lovely goodies!	Market Square
Thursday 18 th December	6.17pm train from Ludlow	<u>Folk Down the Track</u> Sue Harris and Bandamania will be playing plus a wide range of musicians who gather for the monthly folk club at the Castle Inn, Knucklas.	Catch the train from Ludlow or Craven Arms to Knucklas
Sunday 21 st December	from 7:30pm	<u>Green Drinks</u>	Rose and Crown
Thursday 25 th December	10.00am	<u>Tweedy Christmas Ride</u>	Castle Square
Sunday 28 th December	10.30am	<u>Macmillan Christmas Family Cycle Ride</u>	Dinham Millennium Green

January

Thursday 9 th January	9:00am – 2:00pm	<u>Local to Ludlow Market</u>	Market Square
Wednesday 21 st January	from 7:30pm	<u>Green Drinks</u>	Rose and Crown
Thursday 22 nd January	9:00am – 2:00pm	<u>Local to Ludlow Market</u>	Market Square
Saturday 24 th January	11.00am – 1.00pm	<u>Christmas Excess Food Swap</u> Come and bring all your lovely homemade goodies and Christmas leftovers to swap! See Ludlow Grassroots for more info	Ludlow Brewery
Thursday 29 th January	7.30pm	<u>Ludlow : Resilience and Renewables</u> Ideas for a future Ludlow, sustainable in energy and economics. The first in a series of talks by Richard Priestley	The Charles Room, Feathers Hotel

February

Saturday 7 th February	1.00pm – 3.00pm	<u>Clothes, Shoes and Accessories Swap</u> See Ludlow Grassroots for more info	Blue Boar Inn
Thursday 12 th February	9.00am – 2.00pm	<u>Local to Ludlow Market</u>	Market Square
Thursday 19 th February	6.17pm train from Ludlow	<u>Folk Down the Track</u>	
Saturday 21 st February	from 7.30pm	<u>Green Drinks</u>	Rose and Crown
Thursday 26 th February	9.00am – 2.00pm	<u>Local to Ludlow Market</u>	Market Square
23 rd February - 8 th March		<u>Fairtrade Fortnight</u> Further details to follow	



LUDLOW 21

LOCAL INITIATIVES SUSTAINABLE FUTURE

www.ludlow21.org.uk

Ludlow: Resilience and Renewables

*ideas for a future Ludlow, sustainable in energy and
economics – the first in a series of talks*



Speaker:

Richard Priestley

7.30pm Thursday January 29th 2015

The Charles Room

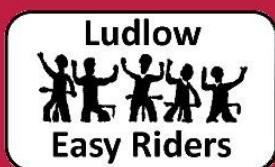
The Feathers Hotel

Ludlow

Free admission

All welcome

Further details: John Daniels 01584 871081 jwd@phonecoop.coop



Ludlow Easy Riders Social Cycling Group

Ludlow Easy Riders are a friendship cycling group who enjoy taking gently paced, sociable cycle rides through the lovely countryside around Ludlow. They welcome other adults to join them on an informal basis, riding at their own risk.



Rides are usually on a Tuesday morning, meeting in Castle Square, Ludlow at 9.45am for a 10am start.

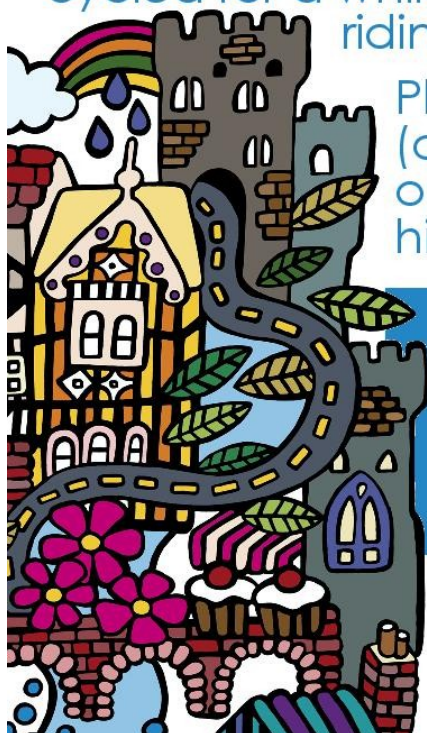
The rides won't be too far and routes are decided on the day to suit the group. The free rides would also appeal to those who have not cycled for a while or aren't too confident riding alone.

Please bring your own bike (or contact Pearce Cycles on 01584 879288 for a bike hire service).

We like our
coffee stops!



Please ring Eliz-Anne Williams 0779 6687134 or Carolyn Rowntree 01584 877551 on the Monday to check if a Tuesday ride is going ahead



Contacts

Ludlow 21 Chairman	Roger Furniss	01584 874205	coordinator@ludlow21.org.uk
Ludlow 21 Company Treasurer & Board	Denise Thompson	01584 875017	denisethompso40@hotmail.com
Ludlow 21 Bookkeeper	Gillian Mortimer	01584 877017	gillian.mortimer1@gmail.com
Ludlow 21 Company Secretary & Newsletter Editor	Megan Blackmore	01584 318087	megan.blackmore@gmail.com
Ludlow 21 Membership Secretary	Clare Currant	01584 875501	membership@ludlow21.org.uk
Fairtrade and Human Rights & Board:	Liz Taylor	01584 831149	fairtrade@ludlow21.org.uk
Food and Farming Group & Board	Tish Dockerty	01584 872043	foodandfarming@ludlow21.org.uk
Events Group & Board	Kim Holroyd		kimholroyd@hotmail.com
Other Board members	Nina Walmsley Alan Stewart Diane Lyle John Daniels	07824 508 536 07929 062 691 01584 876854 01584 878206	nina.m.walmsley@googlemail.com alan-stewart@hotmail.co.uk diane.lyle@btinternet.com jwd@phonecoop.coop
Ludlow 21 Website			www.ludlow21.org.uk
Green Festival Website			www.greenfestival.co.uk
Local to Ludlow Website			www.localtoludlow.co.uk
Ludlow Open Days			http://www.ludlowopendays.org.uk